

Stop Valves - Fitting

The Surestop SPL - SCL - RPL - RCL - UPL - UCL products can be fitted as a direct replacement for a new or existing stop valve or fitted after the existing stop valve

Note!
For all the Surestop push fit valves it is essential that O/D of the pipe is free from paint or any other material for 25mm (15mm valve) or 35mm (22mm valve) from the cut end.

Important Warning!
Direction of Flow:
Your Surestop is clearly marked for the direction of flow. Failure to follow these markings will mean that the Surestop WILL NOT work even if refitted correctly

PUSH FITTING			
Product	Gap A Fitted	Gap B To Insert	Pipe Dia
SS/15/RPM	34.0	88.0	15.0
SS/15/SPL			
SS/15/RPL			
SS/15/UPL			
SS/22/RPM	53.0	117.0	22.0
SS/22/SPL			
SS/22/RPL			
SS/22/UPL			

Pipe Work
Copper or Plastic

COMPRESSION FITTING			
Product	Gap A Fitted	Gap B To Insert	Pipe Dia
SS/15/RCM	55.0	81.0	15.0
SS/15/SCL			
SS/15/RCL			
SS/15/UCL			
SS/22/RCM	58.0	86.0	22.0
SS/22/SCL			
SS/22/RCL			
SS/22/UCL			

Note!
For all the Surestop stop valve compression fit valves it may be possible to use the retained Nuts & Olives of the removed stop valve provided that the threads are G½ for the 15mm & G¾ for the 22mm and that the condition of the Olives are good.
DO NOT CROSS THREAD.
Joining compounds must not be used. PTFE tape may be used if required

Important Warning!
Solder Flux:
Your Surestop is manufactured from high grade plastics and under no circumstances must your Surestop come in contact with solder flux. If a solder joint is made upstream of your Surestop then WATER MUST be flushed through before fitting your Surestop.

Please Note that the tubing is pre connected to the products RPL and RCL

Service Valves - Fitting

The Surestop RCM & RPM valves are service valves and it is required that there is a stop valve fitted before the Surestop valve

Push Fit RPM
See chart for Gaps

Compression Fit RCM
See chart for Gaps

4mm push fit

4mm tube

Tubing to Switch

Section through 4mm push fit showing tube depth insertion.
Applies also to switch connections

Operating and Testing

Switching at the Valve - Products SPL - SCL - RPL - RCL - UPL - UCL

1. The rocker Switch on the Valve enables the valve to turn off the water at pressures between 0 & 10 bar.
2. Press the Lock symbol to close the valve (water OFF) Press the unlock symbol to open the valve (water ON)

Switching at the Remote Switch - Products RPL - RCL - RPM - RCM

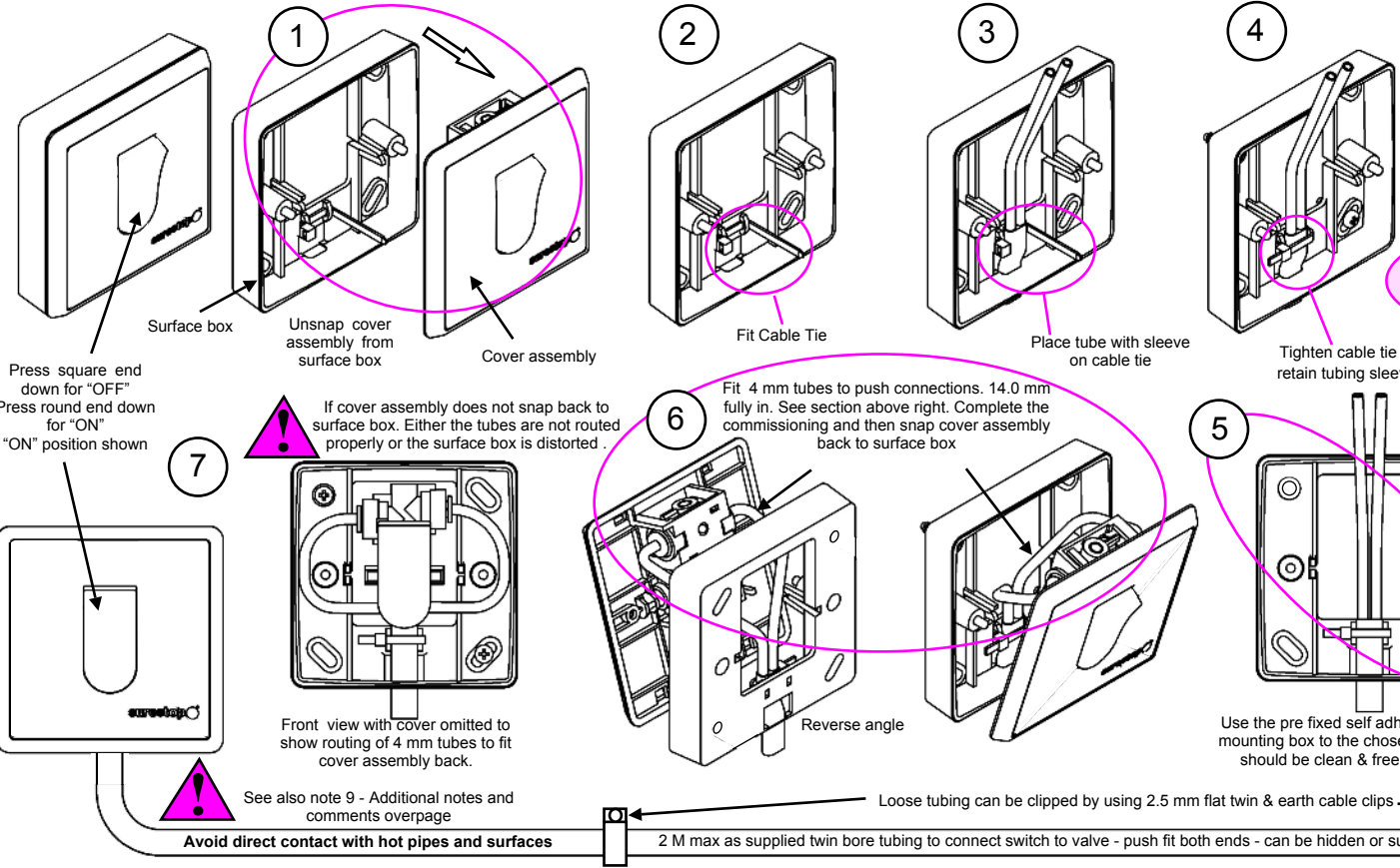
1. The Remote Switch enables the valve to turn OFF the water at pressures between 0.5 & 10 bar.
2. Press the rocker on the Remote switch to the "OFF" position (SQUARE END DOWN) to close the valve (water OFF). Press the rocker to the remote switch to the "ON" position (ROUND END DOWN) to close the Valve (water OFF).
3. The RPM & RCM can only be operated this way. The RPL & RCL can be operated by either of the switches but both switches **MUST BE OPEN** to allow water to flow

Commissioning

1. Press the rocker to the OFF position and open the nearest cold water outlet.
2. Slowly turn the water supply back on, there may be a short burst of water at the open outlet, the water will turn off almost immediately. Press the rocker OFF and on several times to check function and leave in the ON position. Also check for leaks.
3. After commissioning the cover assembly can be snapped back onto the surface box (where fitted). Arrange the tubes as shown in the diagrams and with the card supplied with the switch.

Earth Continuity:

There will be instances where the Earth Continuity of the property is reliant on the the incoming mains pipe work. The installation of the Surestop into the pipe work may therefore compromise the Earth Continuity as the Surestop is of all plastic construction. In such circumstances the pipe work should be bonded across the Surestop. If there is any doubt cross bonding should be carried out as a precautionary measure. The means of cross bonding should be in accordance with the current edition of the IEE (Institute of Electrical Engineers) regulations.

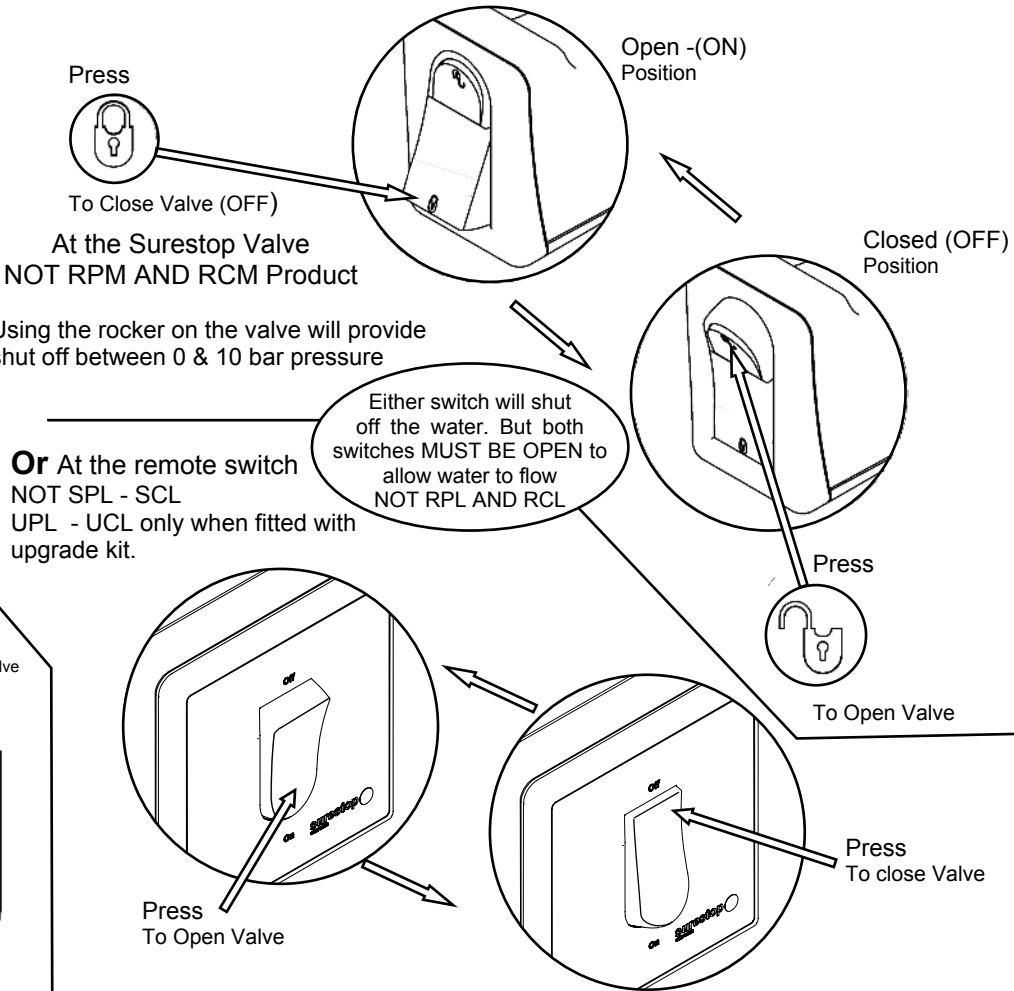


Remote Switch Surface Box - Fitting
RPM - RCM - RPL - RCL
(Recessed instructions overleaf)

The surface to which the switch is to be attached must be flat to prevent distortion & possible malfunction of the switch.

Alternatively use suitable No 6 pan head screws (2 off)to fix switch in place. Diagonals preferred. The surface must be flat & suitable for screwing to.

After checking all joints see commissioning instruction (overleaf) before turning water back ON.



If it is intended to lay the pipe work or tubing into concrete or masonry, conduit pipe with access boxes for the fittings must be used. This is in accordance with Water Regulation scheme 2.7 & BS 8000